



SAGE CROSSING

APARTMENTS

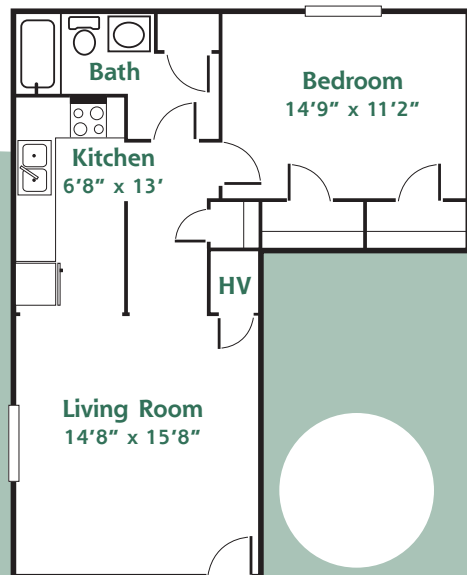
A Neighborhood Close to Everything

Located in the premiere community of Lee's Summit, just southeast of Kansas City, **SAGE CROSSING** Apartments offer quiet suburban living in a growing and thriving area. With easy access to all the attractions of Kansas City, Sage Crossing residents also enjoy restored historic downtown Lee's Summit as well as the conveniences of suburban shopping, dining and an excellent school system.

Sage Crossing apartment homes are newly renovated, unique and spacious floorplans, parking, wall-to-wall carpeting and complimentary window coverings. Laundry facilities are located in each building and residents may take advantage of playgrounds, BBQ areas, a computer room and community center. Our professional management staff is dedicated to providing the highest level of residential service including 24-hour emergency maintenance.

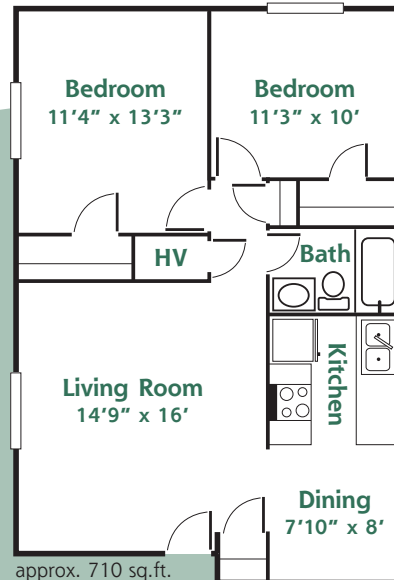
Newly Renovated for Modern

One Bedroom



approx. 560 sq.ft.

Two Bedroom



approx. 710 sq.ft.

Community Features

- Excellent School District
- Community Center
- Playgrounds & BBQ Areas
- Laundry Facilities in Every Building
- 24-Hour Emergency Maintenance
- Convenient to Shopping & Dining

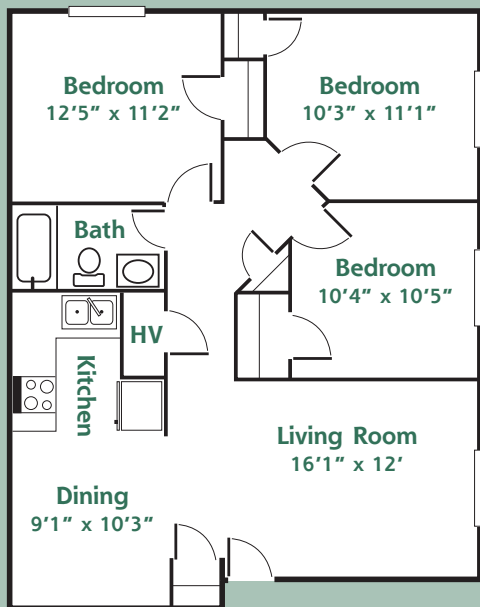
Apartment Features

- Unique & Spacious Floorplans
- Cable & Internet Ready
- Gas Heat Included in Rent
- Individual Climate Control
- Plush Wall-to-Wall Carpet
- Complimentary Window Coverings



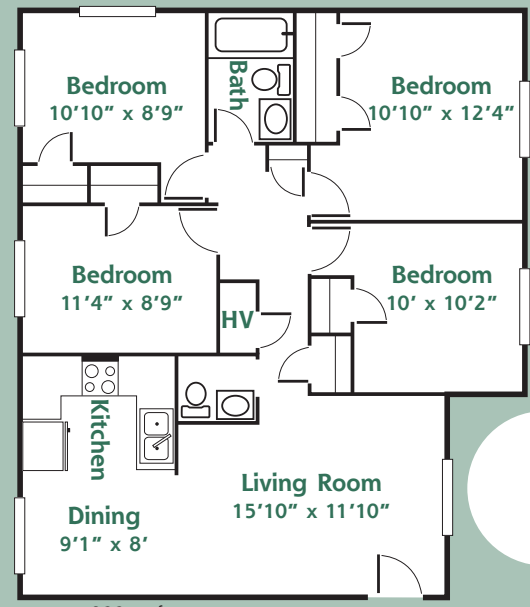
Lifestyles.

Three Bedroom



approx. 840 sq.ft.

Four Bedroom



approx. 900 sq.ft.




**SAGE
CROSSING**
 APARTMENTS

600 NE Howard Avenue
 Lee's Summit, MO 64063
 ☎ 816.524.1394
 ☎ 816.246.7211
 ✉ sagecrossing@equitymgmt.com

Directions
FROM KANSAS CITY: Go South on I-435. Merge onto I-70 E via left exit toward St. Louis. Exit onto 291 North toward Lee's Summit. Turn right onto Chipman Road. Turn left onto NE Howard Avenue. Sage Crossing is on the left.

PROFESSIONALLY MANAGED BY



EQUITY MANAGEMENT, INC.
www.equitymgmt.com



We pledge to the letter and spirit of U.S. policy for the achievement of equal housing opportunity throughout the nation. We encourage and support an affirmative advertising and marketing program in which there are no barriers to obtaining housing because of race, color, religion, sex, handicap, familial status or national origin.